

Extraordinary Loudspeakers from GoldenEar Technology!

We Make High-End Affordable™



"The Next Loudspeaker Superpower"

— Doug Schneider, *Soundstage*

In 1972 Sandy Gross co-founded one of the world's premier loudspeaker companies. Then in 1990 Sandy and Don Givogue did it again. Now Sandy and Don have rejoined forces to create GoldenEar Technology. Their goal is to produce extraordinary loudspeakers which embody revolutionary engineering breakthroughs, while adhering to the uncompromising standards of superb sonic performance, elegant styling and exceptional value that they have always used as their personal design benchmarks. GoldenEar's launch into the market has been the most successful ever for a new loudspeaker company in terms of sales, prestigious awards and honors plus a remarkable series of rave reviews from around the world.

- Triton™ Two Tower and TritonCinema™ System
- SuperSat™ 50 and SuperCinema® 50 System
- SuperSat™ 3 and SuperCinema® 3 System
- ForceField™ 4 High-Powered Subwoofer
- ForceField™ 3 High-Powered Subwoofer



GoldenEar Technology
A Passion for Sonic Perfection®

Triton Two Tower with Built-In 1200-Watt Powered Subwoofer

The Triton Two Tower is a remarkable, award-winning high-performance loudspeaker with a built-in powered subwoofer. It is designed for superb performance in both high quality two channel stereo systems as well as in multi-channel home theater and music systems. Its sleek, elegantly curved and tapered design is important from both a styling and a performance perspective. It has a gorgeous piano black finish and its compelling cutting-edge silhouette speaks for itself. Additionally, the very narrow front baffle contributes significantly to Triton's exceptional 3D imaging capability, which is especially important when used in 3D home theaters. Cutting-edge technology is synergistically combined to deliver the extraordinary sound quality of the Triton, which can be a revelation. Their dynamic, effortless, you-are there clarity will almost literally put the live performance or action right into your home.

The built-in powered subwoofer section incorporates a GoldenEar designed 1200 Watt DSP controlled digital amp to drive two front-mounted quadratic 5" x 9" long-throw subwoofer bass drivers which

"In awe ... a revelation ... so good it's almost scary"

– Al Griffin, *Sound & Vision*

are coupled to two side-mounted quadratic 7" x 10" planar infrasonic radiators. The amp has a Programmable Logic Device (PLD) based state machine with a nearly instantaneous 278nS update time to perfectly manage a myriad of functions including soft-clipping, DC offset control, output-stage anti-saturation protection and discrete multi-band limiting. Intrinsic THD is extremely low so very little negative feedback is required thus ensuring optimum transient performance.

There are two 4.5" GoldenEar-designed cast-basket high-definition bass/midrange drivers which are arrayed in a D'Appolito configuration around the tweeter. The drivers incorporate a unique Multi-Vaned Phase Plug (MVPP™) as well as a proprietary computer optimized cone topology which helps them to achieve smooth linear response extending beyond 20 kHz. Even though they are crossed over at 3.5 kHz, the extended bandwidth and smooth resonant-free response well beyond their crossover point helps them to achieve near ideal performance in the range in which they are utilized.

The extraordinary high frequency driver is a proprietary High Velocity Folded Ribbon (HVFR™) design. The tweeter diaphragm is a high temperature film, which is folded like an accordion and positioned within an intense neodymium magnetic field. Unlike more conventional dome or ribbon tweeters which push the air, the HVFR develops higher pressure and velocity by squeezing the air out between the pleats of the diaphragm. The result is better impedance matching to the air in the room with greater control, smoother more extended response and dramatically improved dynamic range.

"Spectacularly spectacular ... it's like getting a Tesla Roadster for the price of a Toyota Prius"

– Darryl Wilkinson, *Home Theater Magazine*

TritonCinema Two System

The TritonCinema Two System combines a pair of Triton Two Towers with a SuperSat 50C center channel and a pair of SuperSat 3 satellites for the rear/side surround channels. Subwoofer duty is spectacularly handled by the twin 1200 Watt subs built into the towers. This perfectly timbre-matched system will deliver superior three-dimensional surround performance with both music and movies. Of course, the ultra-thin SuperSat 50C is a perfect on-wall or on-shelf match for the latest generation of super-thin flat screens.

The Tritons have Triumphed!

- **Audio Product of the Year:** *Sound & Vision*
- **Affordable Loudspeaker of the Year:** *The Absolute Sound*
- **Affordable Floorstanding Speaker of the Year:** *HomeTheaterReview*
- **Speaker of the Year:** *What HiFi*
- **Editor's Choice Greatest Overachiever:** *The Perfect Vision*
- **Top Pick:** *Home Theater Magazine*

"Sonic magic"

– Chris Martens, *The Absolute Sound*



TRITON TWO SPECIFICATIONS

Dimensions: Speaker: 5 1/4" W (front) x 7 1/2" W (rear) x 15" D x 48" H (with base)

Base: 11 1/2" W x 18" D. **Frequency Response:** 16 Hz – 35 kHz. **Efficiency:** 91 dB. **Nominal Impedance:** Compatible with 8 ohms. **Driver Complement:** Two 5" x 9" long-throw quadratic subwoofers coupled to Two 7" x 10" planar infrasonic radiators, Two 4 1/2" high-definition cast-basket MVPP mid/bass drivers, One HVFR High-Velocity Folded Ribbon Tweeter. **Rec. Amp.:** 20 – 500 Watt/channel. **Built-In Subwoofer Power Amplifier:** 1200 Watt ForceField digital/DSP amplifier.

SuperSat 50 and 50C Loudspeakers

The SuperSat 50 is a slim, 27" long, 2.5" deep speaker which is available in both a vertical version (SuperSat 50) as well as a horizontal, center-channel-optimized version (SuperSat 50C). Its smooth, detailed, powerful and dynamic sonic capabilities make it the ideal center channel for a Triton Two based theater system, as well as a perfect choice to go alongside a wall- or shelf-mounted flat screen. Of course, its 2.5" depth makes it a perfect on-wall match for the new generation of super thin flat screens.

Its cabinet is constructed from piano-gloss-black-finished aerospace-grade aluminum and contains two GoldenEar 4.5" cast-basket bass/midrange drivers with MVPP configured in a D'Appolito array, surrounding the High-Velocity Folded Ribbon tweeter. Two 4" x 7" quadratic planar low-frequency radiators complete the driver complement. Wall mounting is easily accomplished using the threaded inserts or keyhole mounts on the rear, or table top using the optional smoked-glass shelf stand. An included adjustable foot allows multiple angles when shelf mounting the horizontal center-channel version.



"It's a fantastic system at a fantastic price"

— Geoffrey Morrison, *Residential Systems*

SuperCinema 50 System

The beautifully matched SuperCinema 50 System is the perfect complement to any flat-screen TV, whether wall or shelf mounted. It combines two SuperSat 50s, a SuperSat 50C center channel, two SuperSat 3s for the side/rear surround channels and an earthshaking 1200 Watt ForceField 4 powered subwoofer. It will elegantly immerse you in a rich enveloping 3D soundfield which will make your favorite movies and music literally come alive in your home.



SUPERSAT 50/50C SPECIFICATIONS

Dimensions: 27" H (W) x 4³/₄" W (H) x 2¹/₂" D. **Frequency Response:** 60 Hz – 35 kHz. **Efficiency:** 92 dB. **Nominal Impedance:** Compatible with 8 ohms. **Driver Complement:** Two 4" x 7" quadratic planar low-frequency radiators, Two 4¹/₂" high-definition cast-basket MVPP mid/bass drivers, One HFVR High-Velocity Folded Ribbon Tweeter. **Rec. Amp.:** 20 – 200 Watt/channel.

SuperSat 3 and 3C Loudspeakers

The SuperSat 3 is an elegantly curved, compact satellite speaker designed for use when very high-performance yet small size is desired. It is also the ideal matching rear or side surround speaker for a system based on the Triton Two or SuperSat 50. In addition, four SuperSat 3s and one SuperSat 3C, combined with a ForceField 3 powered subwoofer, make up the superlative SuperCinema 3 sub/sat multichannel system. As with the SuperSat 50, there is both a vertical model (SuperSat 3) and a horizontal model optimized specifically for center-channel applications (SuperSat 3C).

The SuperSat 3's svelte, 2.7" deep, 12" tall cabinet is constructed from a rigid, non-resonant marble powder infused polymer and is finished in a gorgeous piano-gloss black. The SuperSat 3 models incorporate two GoldenEar MVPP 4.5" cast-basket bass/midrange drivers positioned on either side of the HFVR tweeter. The SuperSat 3 includes a stand for shelf mounting. The 3C includes an adjustable angling foot for ideal center channel positioning. Both models incorporate a threaded insert as well as keyhole mounts for wall mounting or use with the optional floor stand.



"Compact little wonders"

— Mark Fleischman, *Home Theater Magazine*

SUPERSAT 3/3C SPECIFICATIONS

Dimensions: 12" H (W) x 4³/₄" W (H) x 2¹/₁₀" D. **Frequency Response:** 80 Hz – 35 kHz. **Efficiency:** 92 dB. **Nominal Impedance:** Compatible with 8 ohms. **Driver Complement:** Two 4¹/₂" high-definition cast-basket MVPP mid/bass drivers, One HFVR High-Velocity Folded Ribbon Tweeter. **Rec. Amp.:** 20 – 200 Watt/channel.



"Sets a new performance standard for lifestyle friendly speakers"

— Steve Guttenberg, *CNET Audiophile*

SuperCinema 3 System

The SuperCinema 3 System is a compact, elegant and technologically sophisticated sub/sat system which is equally at home in an intimate room or a large, grand space. It has the power to fill either with glorious sound for your music or cinematic enjoyment. This SuperCinema System combines four SuperSat 3s with a SuperSat 3C center channel and a 1000 Watt ForceField 3 powered subwoofer to deliver absolutely unbeatable state-of-the-art value.

ForceField 3 and 4 Powered Subwoofers

There are two astonishing ForceField powered subwoofers. Both combine subtle musical detail with earth-shaking high impact power. The compact ForceField 4 incorporates the same 1200 Watt digital amp developed for the Triton Two. It drives a front-mounted high-power ultra-long-throw 10" sub-bass driver coupled to a downward-firing 11" x 13.9" quadratic planar infrasonic radiator. The unique and attractive cabinet shape, with its non-parallel cabinet walls, helps the ForceField subs achieve extraordinarily deep and tuneful bass – ideal for music and movies. The ultra-compact ForceField 3 is basically a smaller, less-expensive version of the ForceField 4, with a 1000 Watt digital amp, 8" active driver and 9.6" x 11.4" quadratic planar infrasonic radiator. Finish on the subwoofers is matte black.



"Near perfect ... a tour de force"

– Andrew Robinson, *HomeTheaterReview.com*

FORCEFIELD 4 SPECIFICATIONS

Dimensions: 13¹/₂" W x 17⁷/₈" D x 12³/₄" H (height is with feet installed). **Frequency Response:** 14 Hz – 250 Hz. **Driver Complement:** One 10" long-throw high-output bass driver, One 11" x 13" quadratic planar infrasonic radiator. **Amplifier:** 1200 Watt ForceField digital amplifier. **Speaker Level High-Pass Filter:** 6 dB per octave at 150 Hz (approx.). **Speaker Level Low-Pass Filter:** 12 dB per octave continuously variable from 40 – 150 Hz. **Low-Level Input (Mono):** Unfiltered (no low pass), direct-coupled.

"I've never heard a sub this small go that deep"

– Steve Guttenberg, *CNET Audiophiliac*

FORCEFIELD 3 SPECIFICATIONS

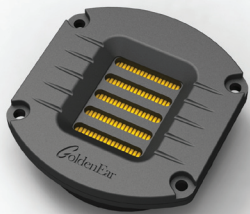
Dimensions: 11¹/₂" W x 15³/₄" D x 11" H (height is with feet installed). **Frequency Response:** 18 Hz – 250 Hz. **Driver Complement:** One 8" long-throw high-output bass driver, One 9" x 11" quadratic planar infrasonic radiator. **Amplifier:** 1000 Watt ForceField digital amplifier. **Speaker Level High-Pass Filter:** 6 dB per octave at 150 Hz (approx.). **Speaker Level Low-Pass Filter:** 12 dB per octave continuously variable from 40 – 150 Hz. **Low-Level Input (Mono):** Unfiltered (no low pass), direct-coupled.

*SPECIFICATIONS ARE SUBJECT TO CHANGE WITHOUT NOTICE.



The ForceField's high-power drivers and pressure-coupled quadratic infrasonic radiators deliver unexcelled bass performance

State-of-the-Art GoldenEar Technology Drivers



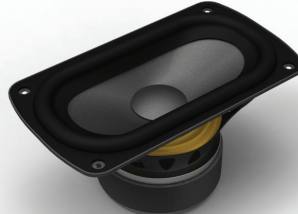
High-Velocity Folded Ribbon Tweeter (HVFR)

- Tweeter Diaphragm is a High Temperature Film
- High-Power Neodymium Magnets
- Squeezes/Pressurizes Air Instead of Pushing It
- Greater Control, Smoother More Extended Response
- Vanishingly Low Distortion
- Dramatically Improved Dynamic Range and Detail
- Superb Dispersion Characteristics
- Superior Impedance Match to Air
- Used in All Models



4.5" High-Definition Bass/Midrange Driver

- GoldenEar Multi-Vaned Phase Plug (MVPP) Design
- Rigid Free-Flow Cast-Basket Chassis
- Proprietary Computer Optimized Cone Topology
- High-Gauss Magnet Assembly
- 1" High-Temperature Kapton Former Voice Coil
- Extremely Extended Resonant-Free Linear Frequency Response Characteristics
- Used in All Models



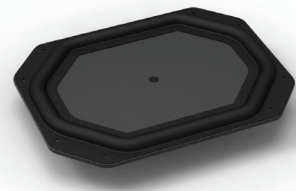
5" x 9" Quadratic Sub-Bass Driver

- Ultra-Long Throw
- Glass Fiber and Nomex® Composite Cone
- Huge, High-Gauss Magnet Assembly
- 1.5" High-Temperature Aluminum Voice-Coil
- Quadratic Cone Topology for Maximum Cone Surface Optimization
- Used in Triton Two



Ultra-Long-Throw Sub-Bass Driver

- Ultra-Long Throw High-Output Bass Driver for Powerful Room-Shaking Bass
- Superior Transient Performance for Exceptional Detail
- Computer Optimized Ultra-Stiff Fiber Cone
- Massive High-Gauss Magnet Assembly
- 8" Used in ForceField 3
- 10" Used in ForceField 4



Quadratic Planar Infrasonic Radiator

- Pressure-Coupled Loading Extends Usable Bass Performance to the Infrasonic Region
- Performs Like a Well-Tuned Transmission Line but with Superior Transient Performance and Control
- Used in all ForceField Subwoofers and Triton Two

Follow us on: [facebook.com/goldenear](https://www.facebook.com/goldenear) & twitter.com/goldenartech

© GoldenEar Technology. All right reserved.

Reproduction in whole or in part without our express permission is prohibited.

GoldenEar Technology®
A Passion for Sonic Perfection™

www.goldenear.com

PO Box 141, Stevenson, MD 21153 • (410) 998-9134

For more info on other GoldenEar products:

